



PORTFOLIO

FAIZA HUSSAINI

CONTENTS

INSTITUTIONAL 1-2
Sports Academy

COMMERCIAL 3-4
Government Office

RECREATIONAL 5-9
Sky High Apartments Club House
Vision Avenue's Club House

RESIDENTIAL 10-12
Sky High Apartment Show Unit
Shaikpet Villa

ACADEMIC WORKS 13
House for the disabled

COMPETITIONS 14
Kitaab Ghar - Public Library

MISCELLANEOUS 15
Furniture Design
Sketches
Photography



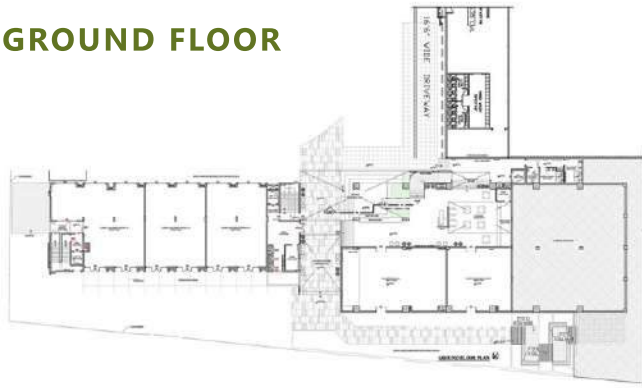
INSTITUTIONAL

SPORTS ACADEMY

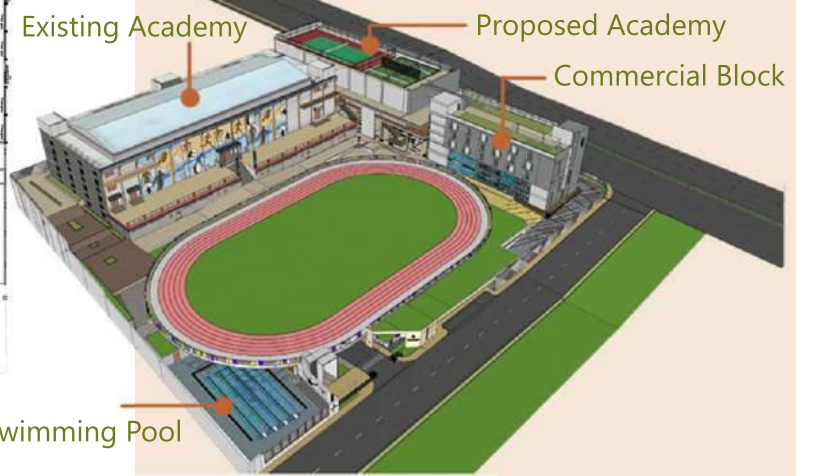
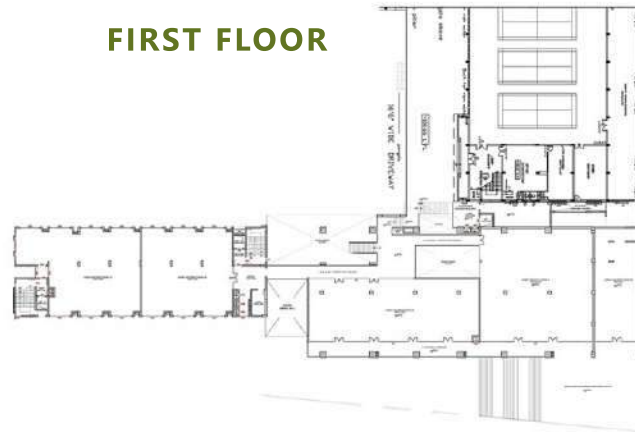
Project SPORTS ACADEMY
 Built up Area 70000 S.ft
 Height 15 M
 Floors 3 Floors
 Architects Genesis Planners
 Role Lead Interior Architect
 Style Contemporary
 Location Gachibowli, Hyd, India

The design components include extension of badminton courts, swimming pool, support amenities, commercial space and residential accommodation for the students & staff, a swimming pool (half Olympic size) for fitness activities. Other spaces include one 200m, 5lane athletic running track including playground (mini football ground), space for support amenities and commercial activities, and parking as per the norms.

GROUND FLOOR

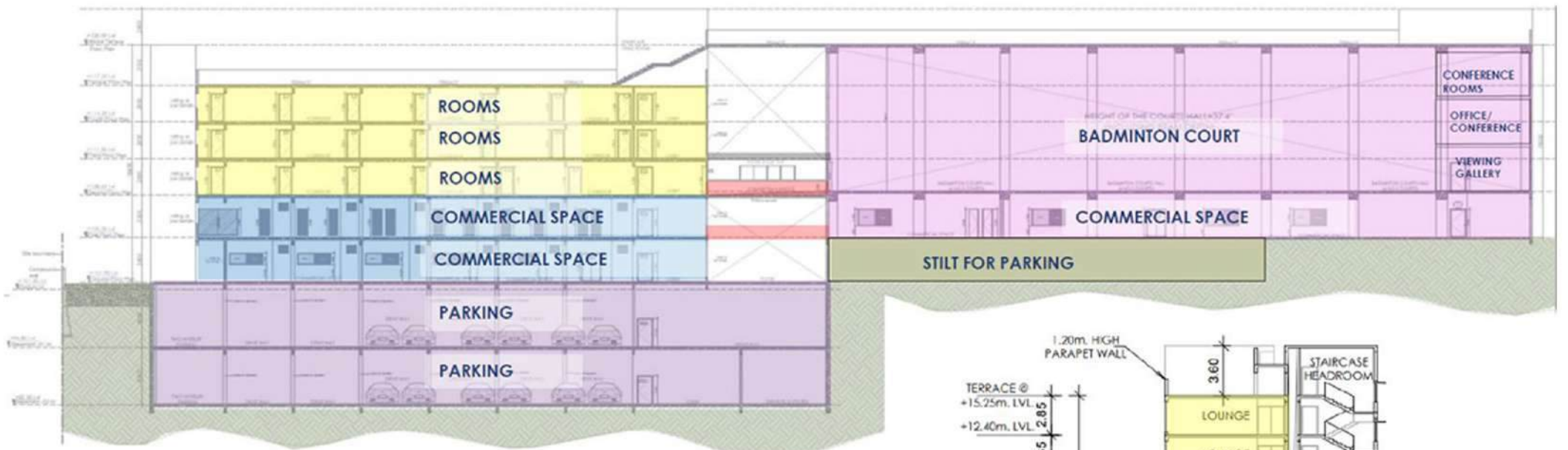


FIRST FLOOR



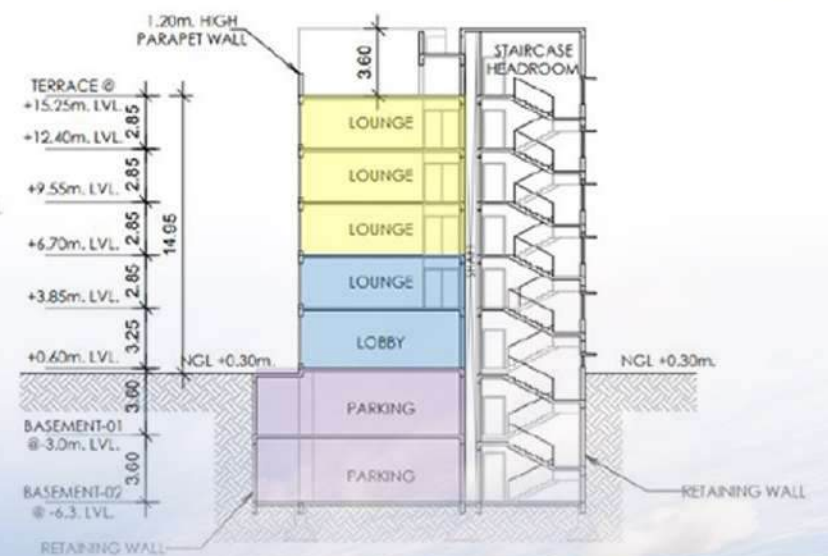
DESIGN FEATURES

Sustainable site planning principles are attended in master planning by reducing the built footprint and maximising the landscaped greens. Grass pavers, use of native species, recycled use of wastewater, water management systems have been integrated in the outdoor design. Visual Comfort, Thermal Comfort, heat gain reduction by suitable orientation of built spaces, Use of renewable energy technologies are the serious concerns addressed in the holistic design of the entire campus.



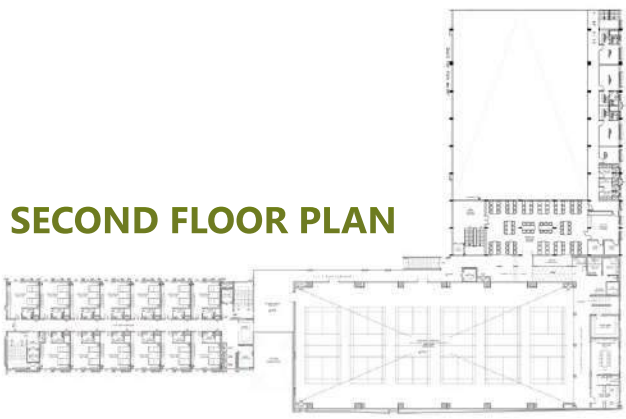
SECTION AA

SECTION-AA



SECTION BB





SECOND FLOOR PLAN



THIRD FLOOR PLAN



FOURTH FLOOR PLAN

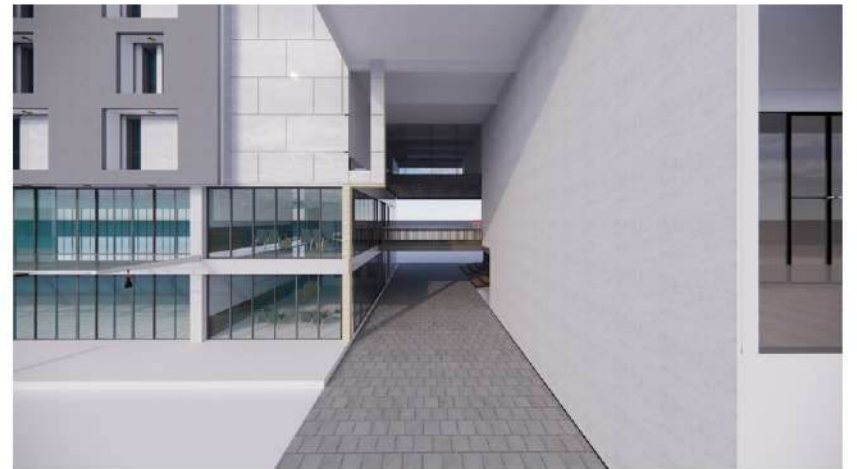
Swimming Pool



The objective of the Foundation is to train, nurture and guide young talent with the purpose of developing international badminton champions. The academy will work together towards the shared vision of developing outstanding athletes and coaches.

The programme entails construction of a high-performance training centre comprising six air-conditioned badminton courts in the premises at Gachibowli in Hyderabad, a Sports Science Centre and a new training centre.

The sports science centre will get top quality resident nutritionists, physiotherapists and conditioning experts on board for all round development of players and to ensure that the badminton coaching imparted by the academy is at par with global stan-





OFFICE INTERIORS

GOVERNMENT OFFICE

Project GOVERNMENT OFFICE BUILDING
 Year 2018
 Total Area 14455 SQM
 Floor Area 2981 SQM
 Floors G + 4 Floors
 Architects Genesis Planners
 Role Project Head & Core Designer
 Style Luxury - Contemporary
 Location Amaravati, AP-INDIA

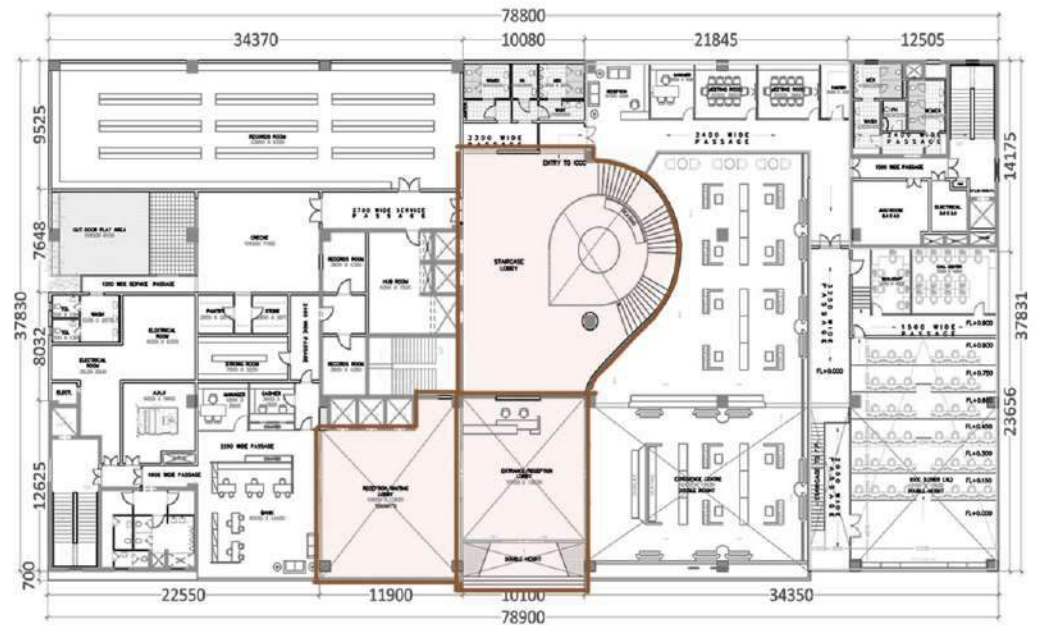
This was G+4 floors office space located at the capital city of Andhra Pradesh-Amaravati .

The layout of each floor was designed to suit the requirements of the organization.

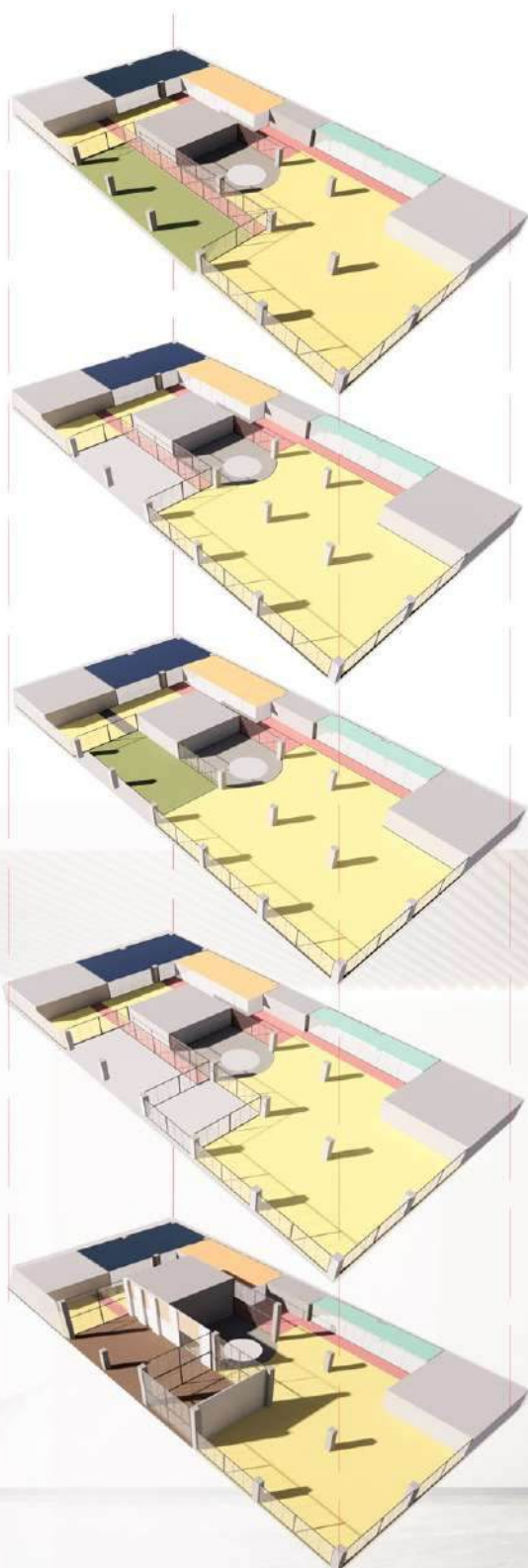
GROUND FLOOR - LOBBY VIEWS

Each floor occupancy included 230-250 number of employees with central extravagant lavish staircase.

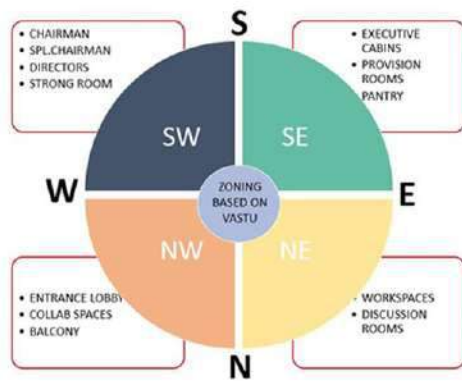
The office at each floor occupied ample space for huge conference halls, training centres and meeting rooms. It also has an elaborate Experience centre basically to showcase esteemed projects of the organization.



AREA DIAGRAM



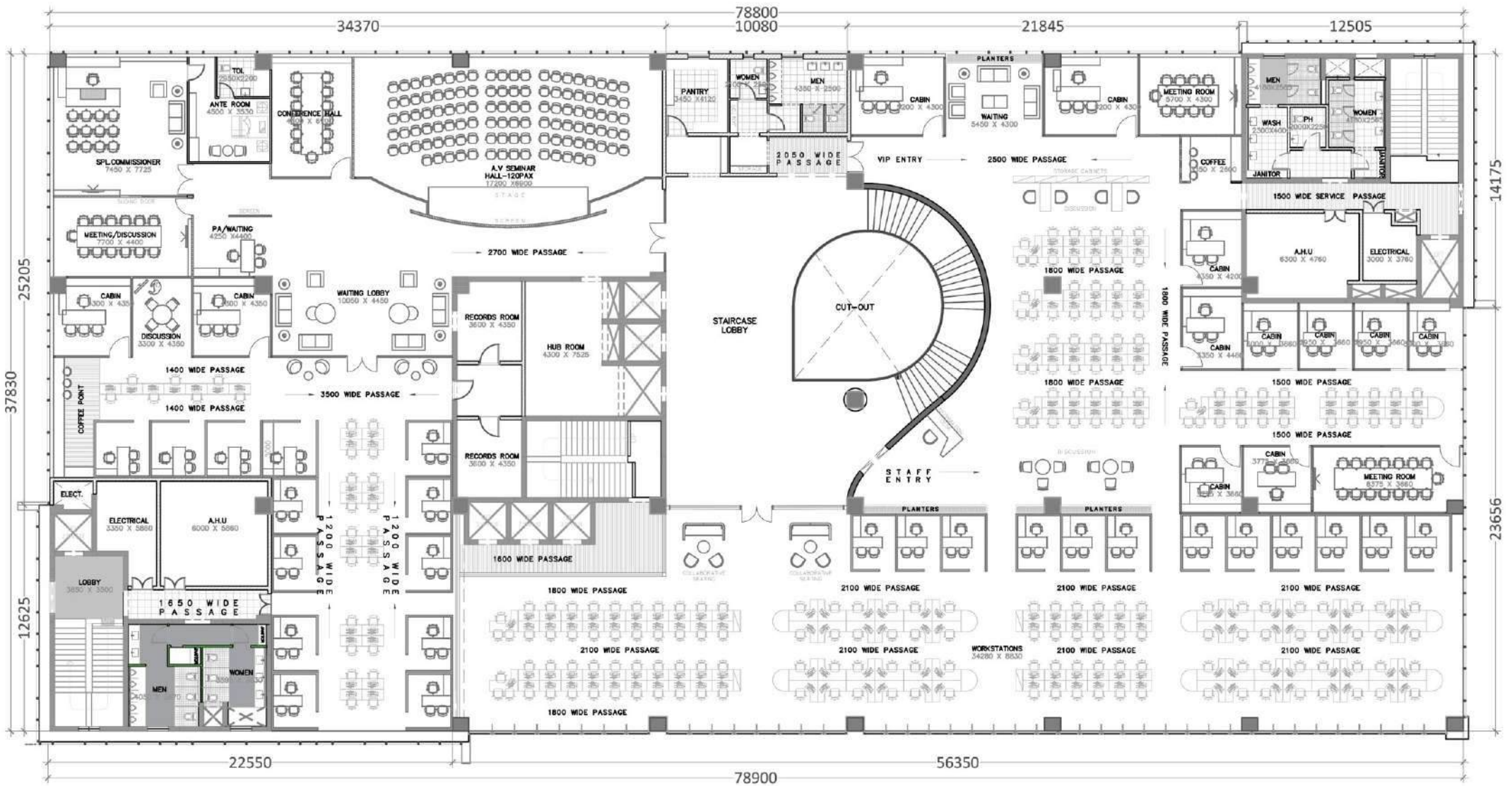
ZONING CONCEPT



- CHAIRMAN & EXECUTIVE DIRECTORS
- CONFERENCE AND MEETING ROOMS
- COLLOBORATIVE SPACES
- SERVICE STAIRS, LIFTS AND TOILETS
- PASSAGE AND CORRIDORS
- EXECUTIVE CABINS

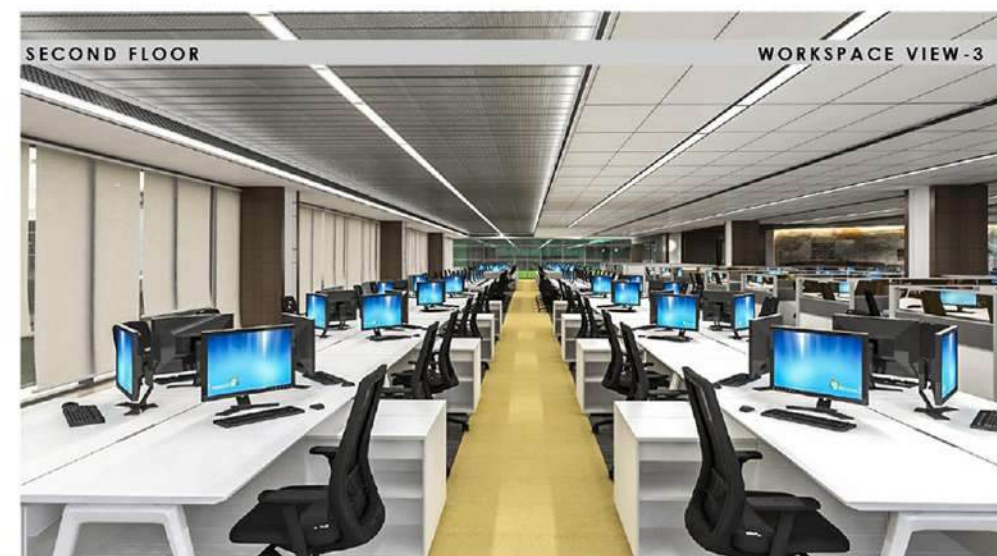


SECOND FLOOR - WORKSPACE



TASKS OVERSEEN UNDER-SUPERVISION

- Worked closely with the client and the internal design teams to finalize concepts and develop 3d visuals, prepare required GFC drawings.
- Preparing all Budgetary single line estimates of the entire project for Client to arrive at overall project cost.
- Supervising and monitoring the work at the site on periodic visits during site marking, progress of work, slab and elevation levels to inspect and check the authenticity of the work carried out by contractors in conjunction with Design drawings furnished to them.
- Site checking to ensure and monitor that the work carried out at the site confirms to high standards in terms of quality of materials, workmanship etc.



MATERIAL DESCRIPTION

Travertine Marble Tile



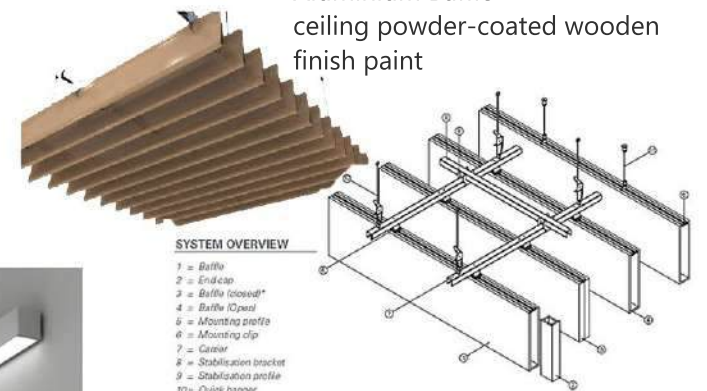
Grey Williams Floor Tile



LED Profile Linear Light



Aluminium Baffle ceiling powder-coated wooden finish paint



SYSTEM OVERVIEW

- 1 = Baffle
- 2 = End-cap
- 3 = Baffle (crossed)
- 4 = Baffle (top)
- 5 = Mounting profile
- 6 = Mounting clip
- 7 = Gasket
- 8 = Stabilisation bracket
- 9 = Stabilisation profile
- 10 = Quin's hanger
- 11 = Wire hanger
- * Length notations

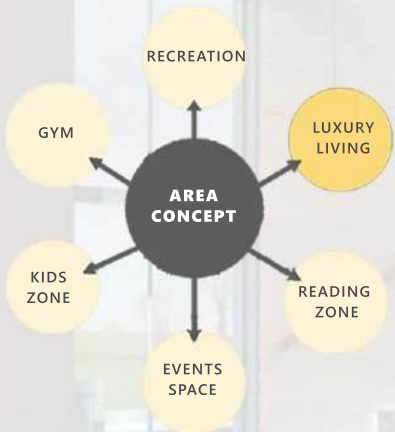
Ivory Glass For Partition

CLUB HOUSE

The club house is built on an area of 40,000 S.Ft. It's cozy interior ambiance provides for indoor sports and games. gym, swimming pool, guest suites, roof top tennis court etc., apart from the many other general amenities and facilities.



The moment you step inside this luxurious club house, You realise the designs that has gone into it, each space has been made to meet the most ultramodern elegances in the world. Each space was designed keeping the extravagant demand of the modern mindset of the population occupying the space.



The ground floor has the majestic triple-height entrance lobby with adequate waiting space. A Multipurpose Hall for a gathering of approx. 200 people allowed the occupants to celebrate their events.

PROJECT SKY HIGH

Site Area: 4.5 Acres Built up Area: 0.87 Million S.FT

Floors: 3B + G + 21 Floors Location: Hyderabad

Height of the buildings: 75 Mtrs

Site Planning is crafted to achieve a consolidated open space at one area to increase use efficiency and desirability, integrating the recreational activities and club house. While siting the buildings, it is exercised to take care of the local climatic context as well.

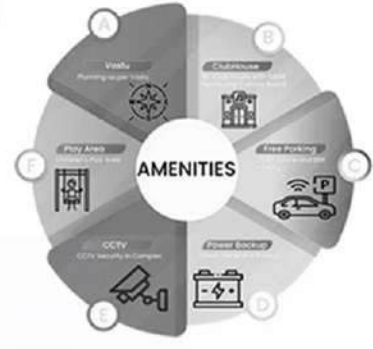
SITE PLAN

The complex grounds 5 towers to a height of G+21 Floors.



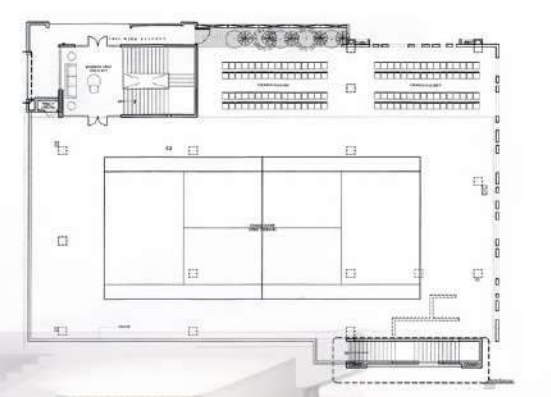
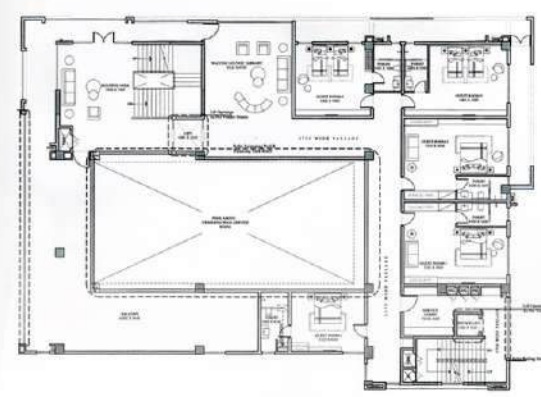
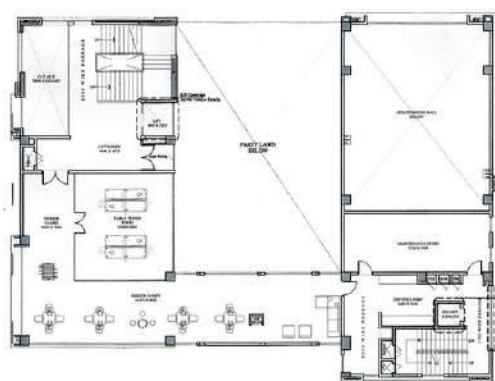
AMENITIES

- ### Clubhouse Pros
- 1 Ideal for starting small & Practising.
 - 2 Interactivity
 - 3 Networking
 - 4 Feedback & Support
 - 5 Volume of Content
 - 6 Different dynamics



FIRST FLOOR PLAN

SECOND FLOOR PLAN



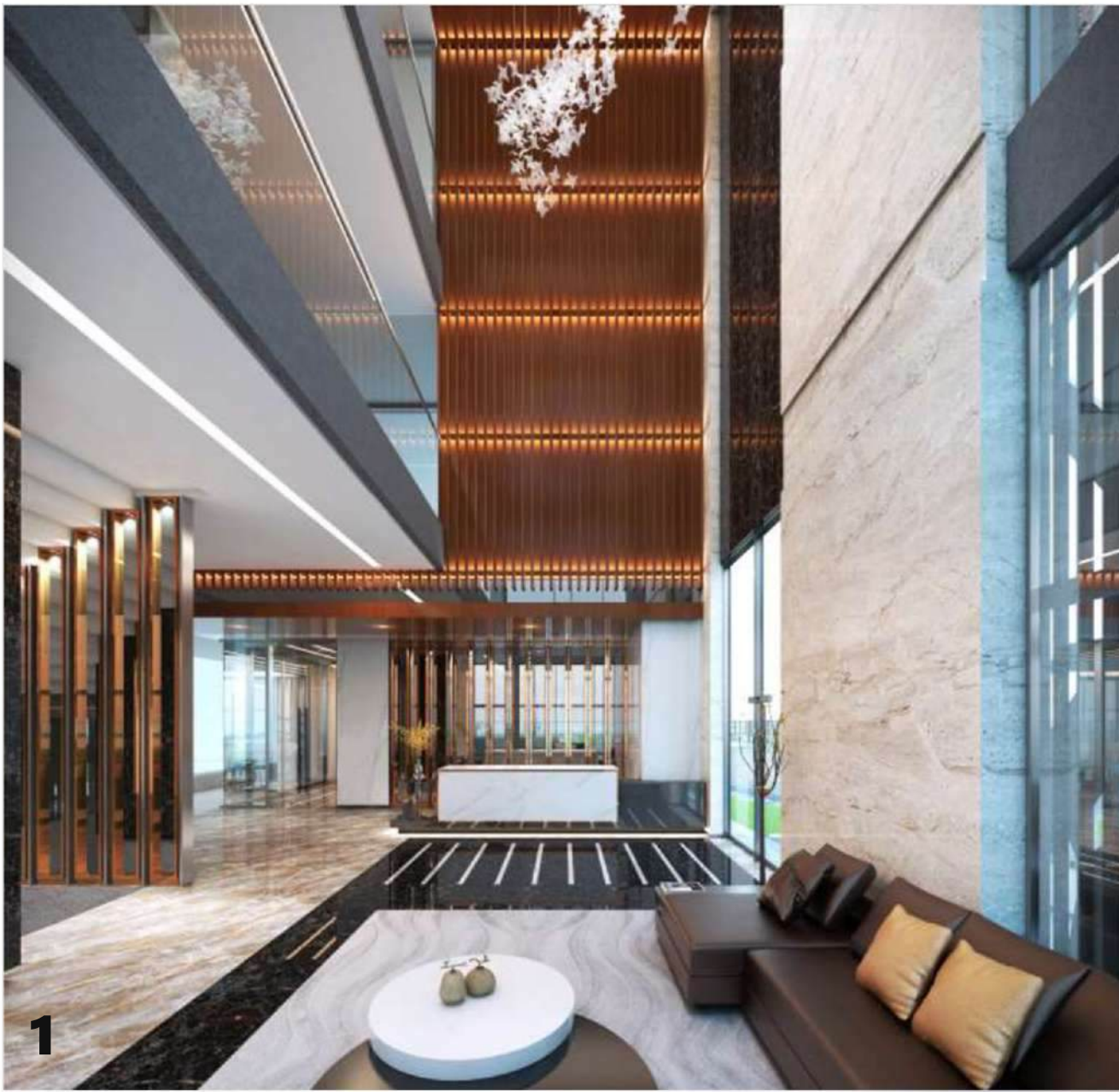
THIRD FLOOR PLAN

FOURTH FLOOR PLAN

TERRACE FLOOR PLAN

The First floor has a Games activity space for the youth to have their time of joy and pleasure. Second Floor has an entertainment setup of a poker game, a cards room space for the older generation and a unisex spa. A major part of Third floor was taken by the sunken pool on the top level, the rest of this space was used to accommodate 5 Guest rooms.





1



2



3



4



5

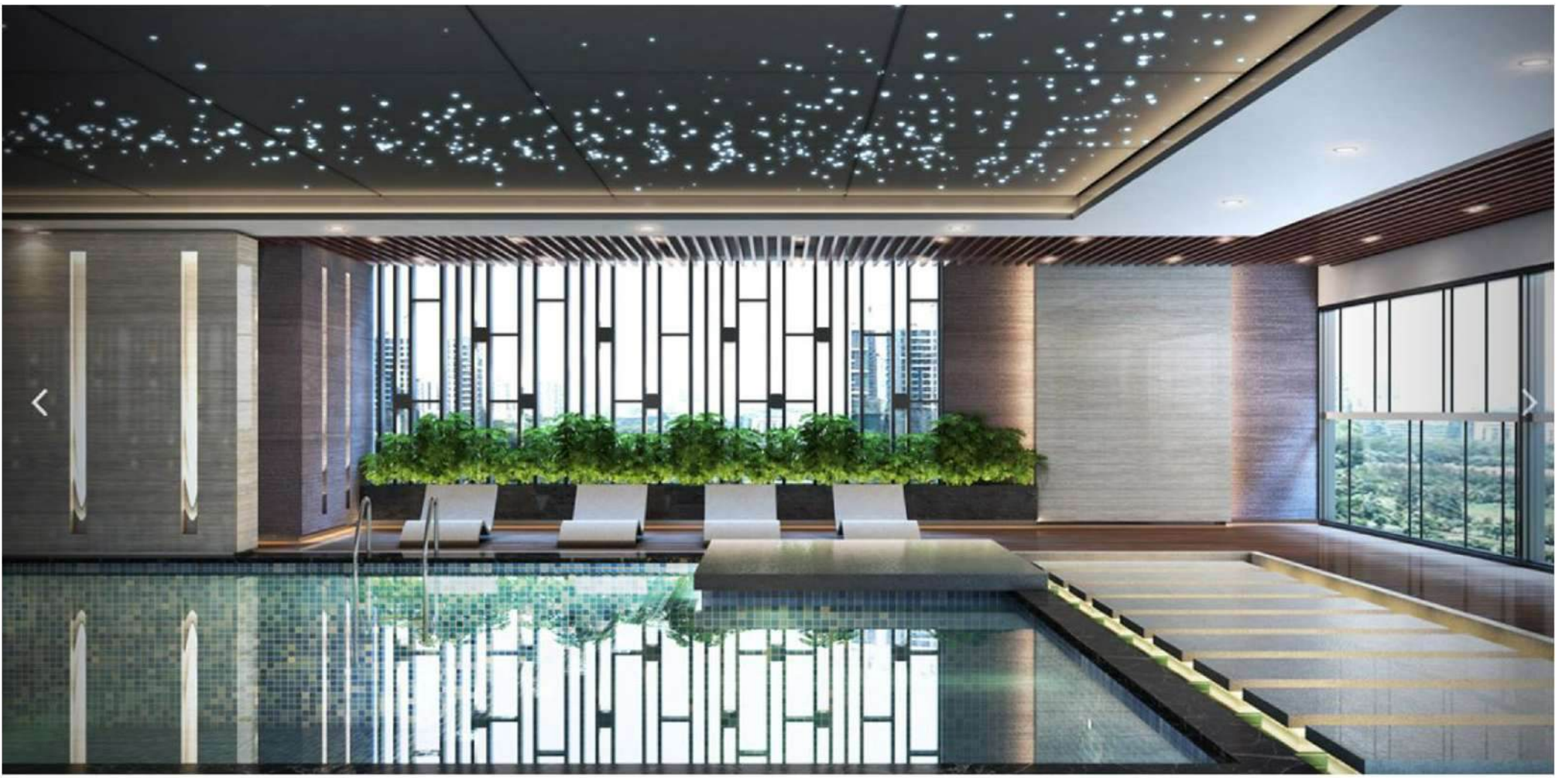
- 1- Entrance Lobby
- 2- Reception
- 3- Waiting Lounge
- 4- Coffee Shop
- 5- Entertainment Lounge
- 6- Cards Room
- 7- Theatre



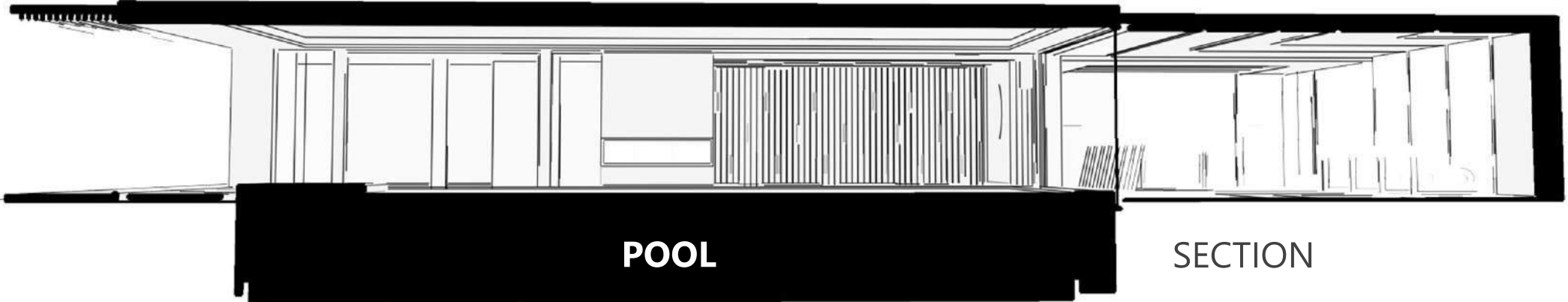
6



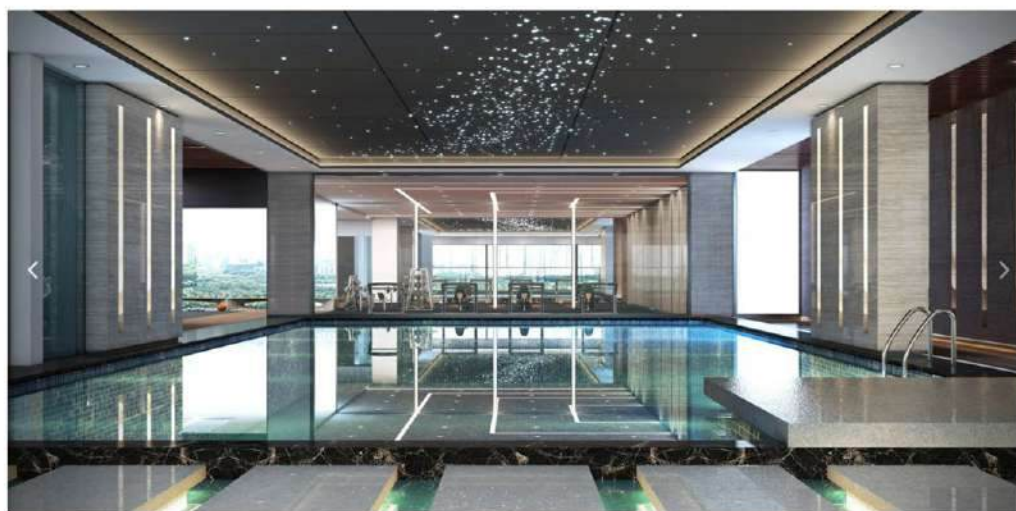
7



Swimming Pool



The spotlight of the entire club house was taken to the Fourth floor which has the spectacular volumes of recreational indulgences such as swimming pool of approx. size 140sqm, a flounce size of Gymnasium with mirror clad walls. This floor also gives the residents an opportunity to relinquish an open Yoga and aerobic space.



Swimming Pool



Gym



Yoga



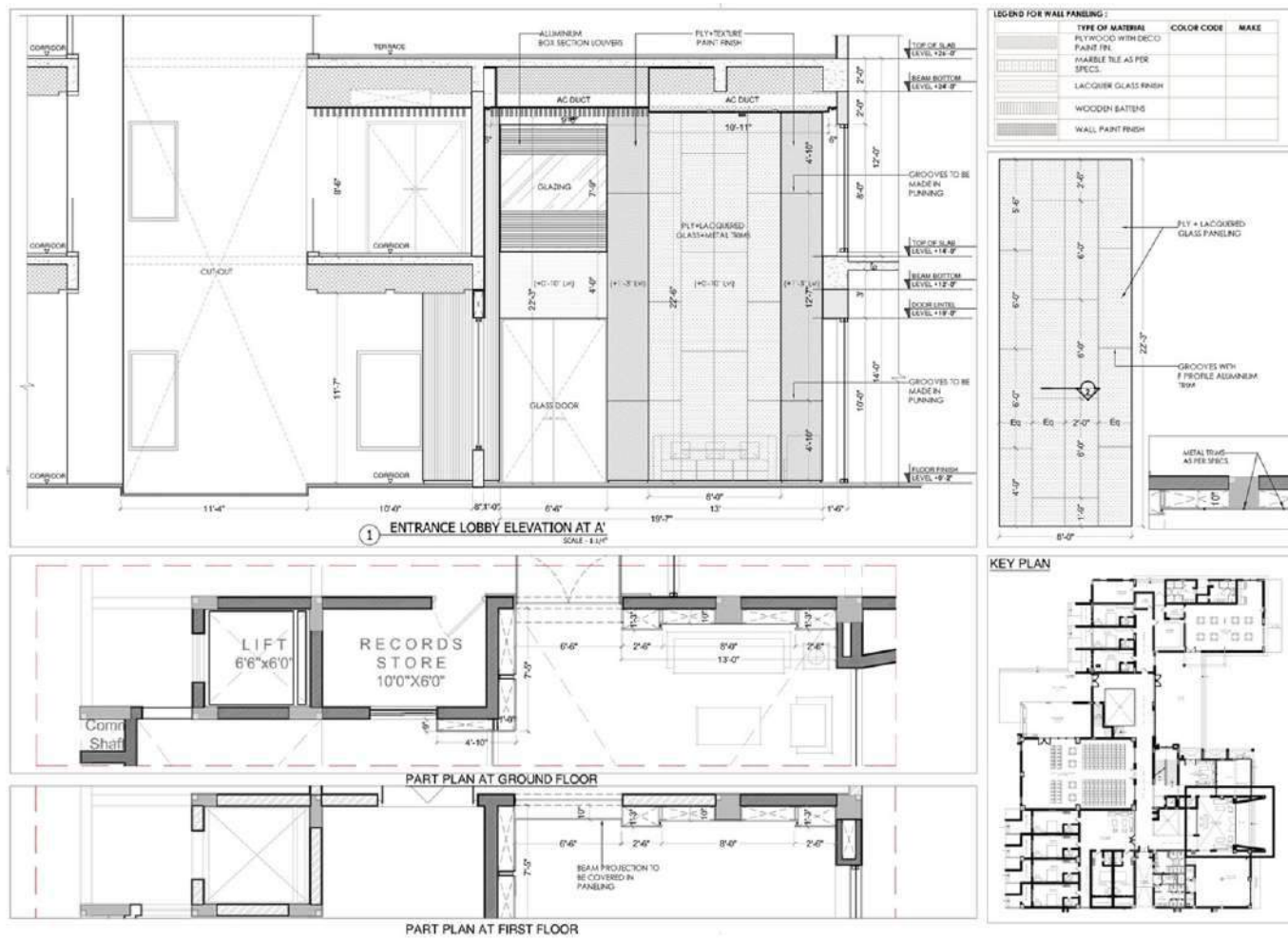
Yoga

GROUND FLOOR



ENTRANCE LOBBY

TECHNICAL DETAILS



RECREATIONAL

Project: Vision Avenue's Club House
 Development Size: 40 acres
 Club House Area: 6000 S.ft
 Floors: G + 2
 No. of units: 274 Villas
 Architects: Genesis Planners
 Role: Lead Interior Designer
 Style: Contemporary And Minimal
 Location: Tellapur, Hyderabad

Vision's Urjith is a gated community where the focus is to create a retreat-like space that stands the test of time. A concept villa that offers you the pride to experience an ultimate lifestyle and also savor the beauty of nature at leisure. Situated in one of the most flourishing and vital areas of Tellapur, Hyderabad, Urjith will be a luxurious and sophisticated gated community of around 274 villas spread across approximately 40 acres, where the fresh breeze will comfort you as you walk through the door of your home or spectacular views of nature unfolds in mysterious ways, enthralling you, every single moment.



FLOOR PLAN



RESTAURANT



CRECHE



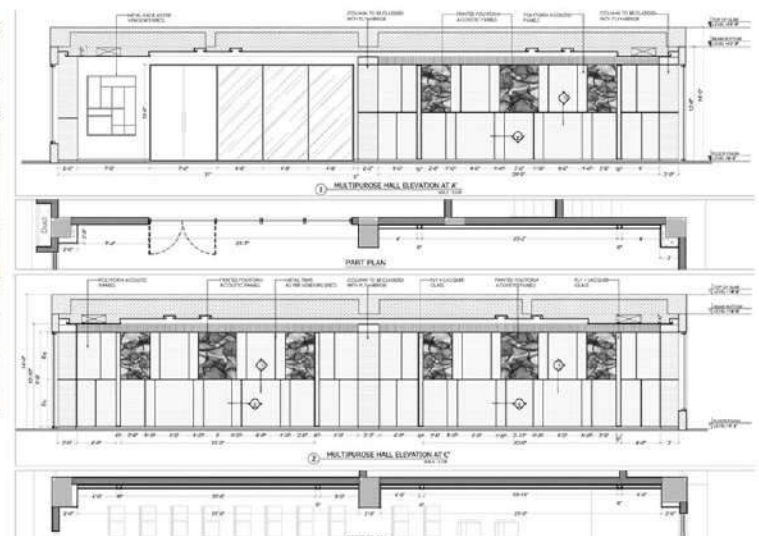
GUEST BEDROOM



STAIRCASE LOBBY



MULTIPURPOSE HALL



CONFERENCE ROOM



BUSINESS LOUNGE



BADMINTON COURT



MEDITATION ROOM



ENTERTAINMENT ROOM



GYM



FIRST FLOOR

SECOND FLOOR



BAR LOUNGE



INTERIOR VIEWS



The living room is large with overlooking balcony therefore a bold ceiling concept with wooden patten integrated with 4mm groove was designed. The furniture was selected in lighter tones of beiges. The statuario marble usage was again continued in the living hall tv wall.

Dining Room



The master bedroom has meticulous design approach with minimal look and feel. The colour scheme used was brown and whites.



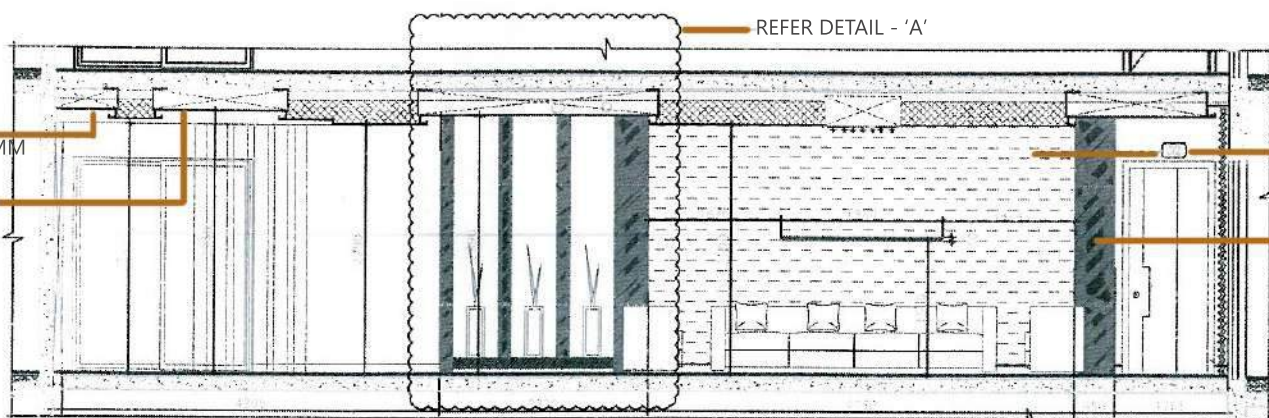
Kids room was designed for a girl with pink and grey hues and a minimal classical appearance using wall mouldings as a design feature.

Material Palette



Botticino Tiles Fluted Panels Statuario Marble

GYPSUM FALSE CEILING LVL +2490MM
PLYWOOD CEILING WITH LACQUER GLASS FIN.

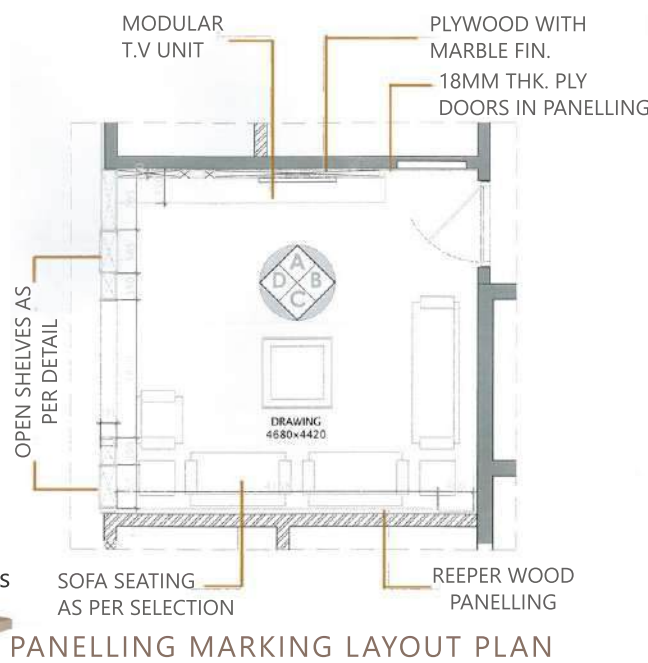


WALL ELEVATION - LIVING ROOM

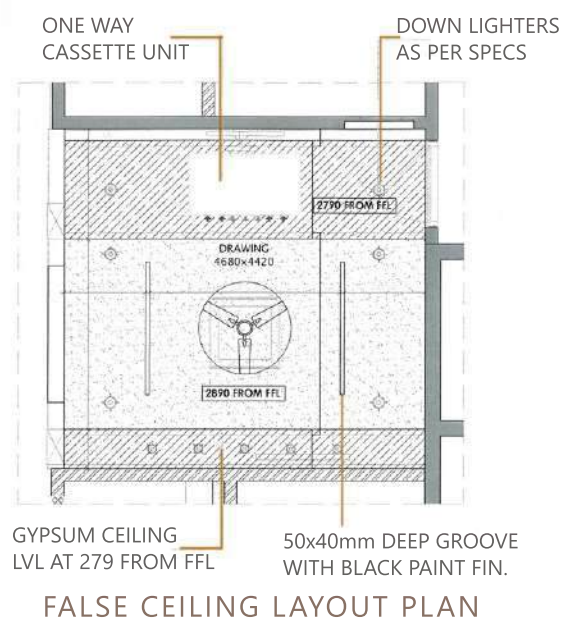


FLOOR PLAN

TECHNICAL DETAILS

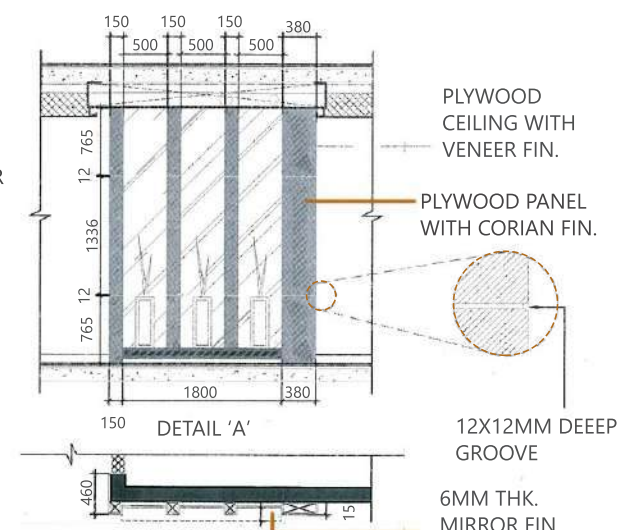


PANELLING MARKING LAYOUT PLAN



FALSE CEILING LAYOUT PLAN

Colours



WALLPAPER OVER PUTTY FIN.
PLYWOOD PANEL WITH CORIAN FIN.

PLYWOOD CEILING WITH VENEER FIN.
PLYWOOD PANEL WITH CORIAN FIN.

12X12MM DEEEP GROOVE
6MM THK. MIRROR FIN.

KEYPLAN (Block - C)



Project	Sky High Gated Community
Show unit	
Area	4450 S.ft
Carpet Area	2930 S.ft
Architects	Genesis Planners
Role	Lead Interior Designer
Style	Contemporary



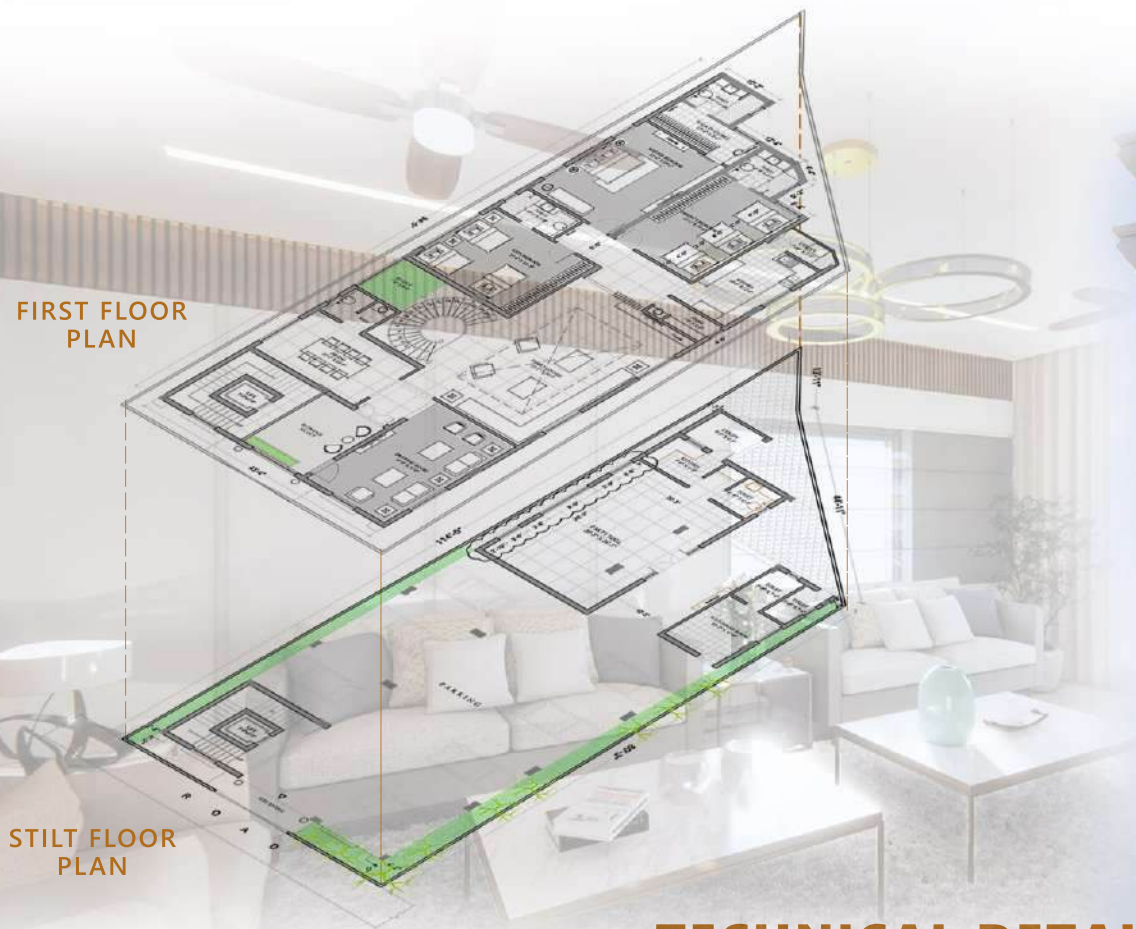
ARCHITECTURE AND INTERIOR DESIGN



First Floor - Drawing Room



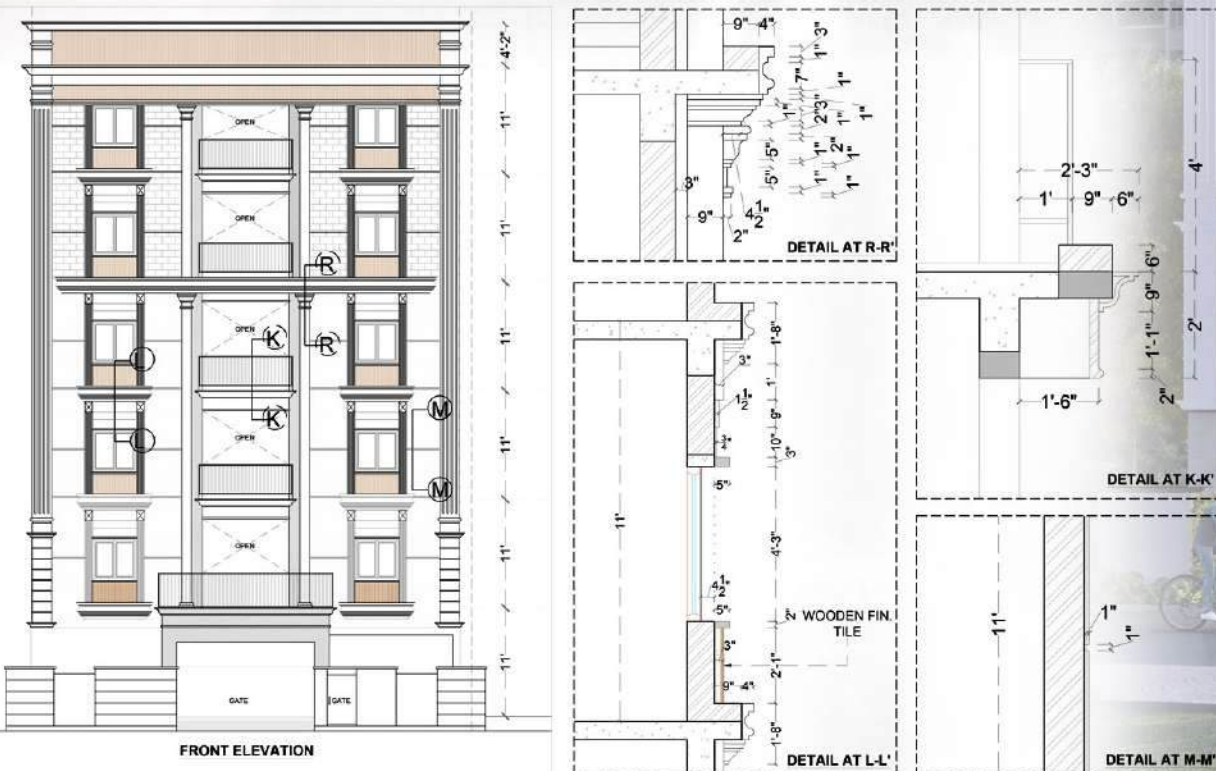
First Floor - Living Room



FIRST FLOOR PLAN

STILT FLOOR PLAN

TECHNICAL DETAILS



FRONT ELEVATION

DETAIL AT R-R

DETAIL AT K-K

DETAIL AT L-L

DETAIL AT M-M

RESIDENCE

Project Shaikpet Villa
 Site Area 375sq.m
 Built up area 3500 sqft per floor
 No.of floors Stilt + 4floors
 Architect Faiza Hussaini
 Style Neo-classical

This house occupied by a family of 8members has 8 bedrooms, 2 luxury living rooms with a sit out space cum foyer at the entrance. Considering the client's minimal design approach a neoclassical style was chosen for the interior of the house.

ELEVATION DESIGN



INTERIOR VIEWS



Third Floor - Hall



TECHNICAL DETAILS

DESCRIPTION	HTS FROM FFL
CALLING BELL @ R-D-H	AT 4'-0" HT
SWITCH BOARD	AT 4'-0" HT
WALL BRACKET	AT 7'-0" HT
NEON LIGHT AT WASH BASIN	AT 7'-0" HT
25A POWER SOCKET FOR A.C.	AT 8'-0" HT
DECORATIVE WALL LIGHT POINT	AT 8'-0" HT
SPLIT A.C. UNIT	AT 8'-0" HT
DISTRIBUTION BOARD	AT 8'-0" HT
FLOOR LAMP (2W BOW)	AT 1'-0" HT
INTERING POINT	AT 1'-0" HT
TELEPHONE JACK	AT 1'-0" HT
6A SWITCH CONTROL FOR REFRIG	AT 4'-0" HT
6A 3PIN SOCKET WITH INDIVIDUAL SWITCH	AT 2'-0" HT
6A 3PIN SOCKET WITH INDIVIDUAL SWITCH FOR UTILITY	AT 2'-0" HT
TELEVISION OUTLET	AT 2'-0" HT
1/4" OF 6A 3PIN SOCKET WITH SWITCH (2W BOW)	AT 2'-0" HT
25A 3W FAN POINT WITH ANCHOR	AT 2'-0" HT
DE-UMIST FAN	
6A SOCKET FOR DEVEIN ABOVE FALSE CEILING	AT 8'-0" HT
6A POWER SOCKET WITH SWITCH NEAR WASH BASIN	AT 3'-0" HT
TRIO WAY CONDUIT	
TRIO WAY CONDUIT	
18 WLED DOWN LIGHTER	
18 WLED DOWN LIGHTER	
HTS RIGHT SIDE - 5 MODULE BOARD	
1 NO. OF 6A 3PIN SOCKET FOR BED LAMP	
1 NO. OF 6A 3PIN SOCKET WITH SWITCH FOR UTILITY	AT 2'-0" HT
FAN DRAWER WITH TRIO WAY SWITCH	
RED LEFT SIDE - 8 MODULE BOARD	
1 NO. OF 6A 3PIN SOCKET FOR BED LAMP	
1 NO. OF 6A 3PIN SOCKET WITH SWITCH FOR UTILITY	AT 2'-0" HT
6A SWITCH FOR L15-TS	
6A SWITCH FOR L15-TS	
6A SWITCH FOR L15-TS	



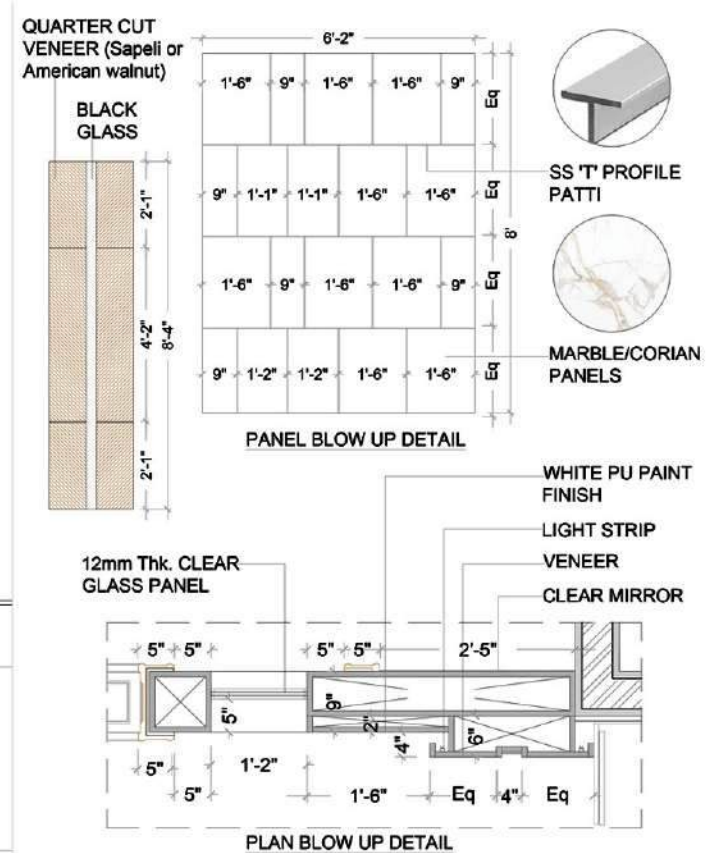
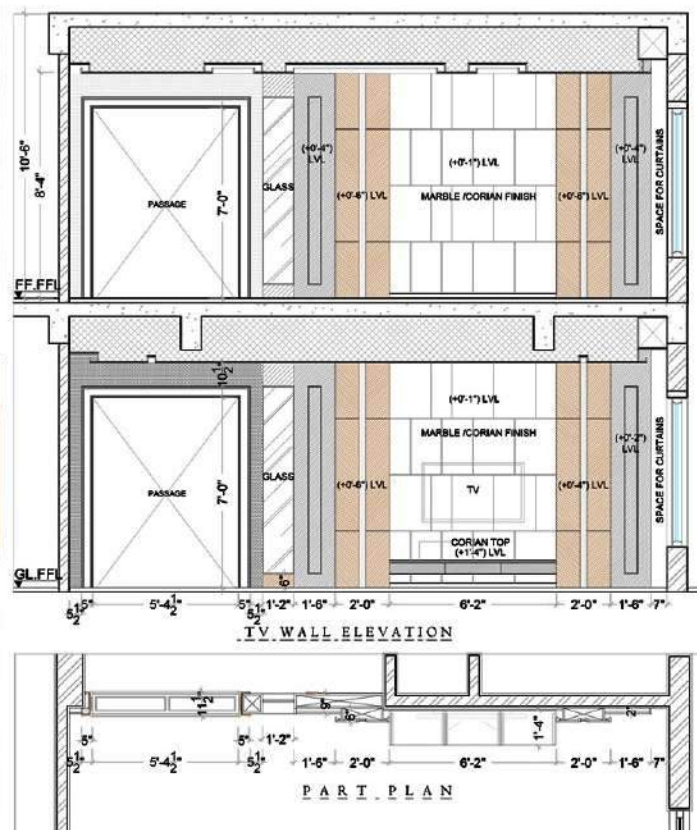
TV Wall - Living Room



Entrance Foyer



Hall



FIRST FLOOR LIVING ROOM TV WALL DETAILS

LEGEND



ACADEMIC WORK

HOUSE FOR THE DISABLED

Project ACCESSIBLE HOUSE

Total Area 150 SQM

Style Minimalistic

A house with an area of approx 150sq.m was designed for a disabled lady using a wheelchair.

The space layout includes 2 bedrooms with attached toilets, a hall with an open kitchen with a living door opening in the backyard of the house.

DESIGN CONSIDERATION

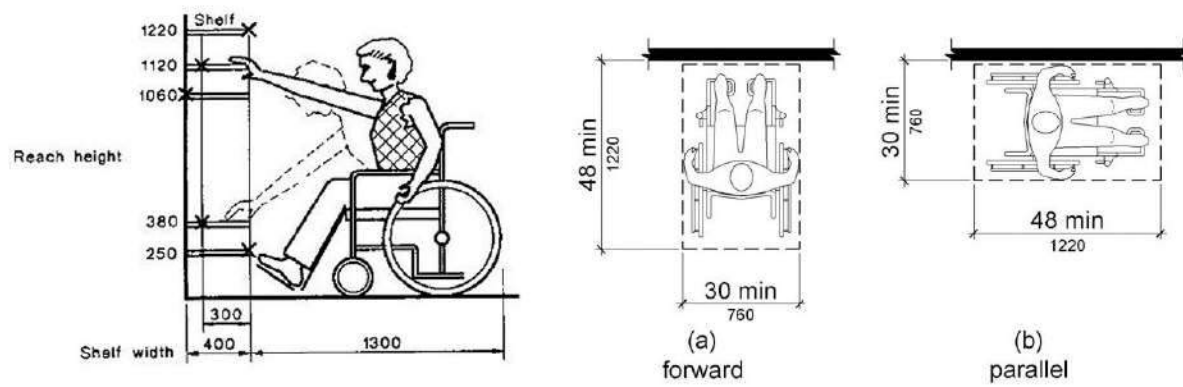
Considering the easy accessibility for the wheelchair the house was designed with less clutter and easy-to-use fixed furniture. A hand bar was added on the walls especially in the bathroom.

A stylish but none slip flooring is incorporated to ensure the risk of fall is reduced.

The bedroom was kept free of clutter for example use of rugs and carpets was avoided so that the person can easily move his wheelchair around the room.

A soothing and pleasant color scheme was used all over the house

The below diagram indicates the standards used while designing the often accessed utilities.



FLOOR PLAN

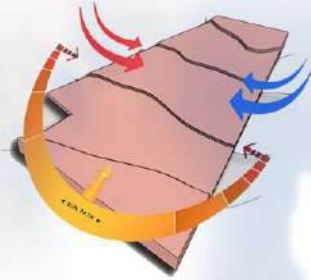
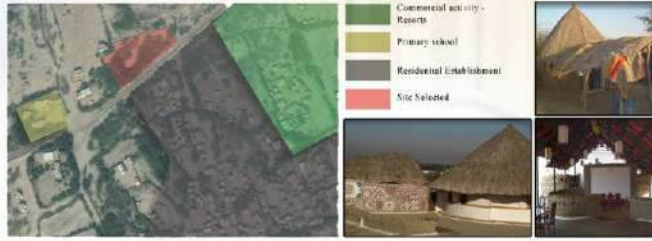


SITE SELECTION AND ANALYSIS

Hodka is a small village in Kutch, Gujarat. Commercial establishments like tourist resorts are also a part of this small village.

It has a population of about 600 people making it a small community in itself.

The site chosen is in the close proximity of an entire residential establishment and a small village school creating easy access for all.



PROJECT KITAAB GHAR PUBLIC LIBRARY

Site Area
4.5 Acres

Location
Hodka, Kutch, Gujarat

The roots of Indian tourism lies in its rural areas. Rural tourism opens the door for rural public to get into tourism business thus encouraging cultural heritage and economic development.

Rural tourism when associated with an educational bridge gives rise to a developed region, a developed country and an evolved population.

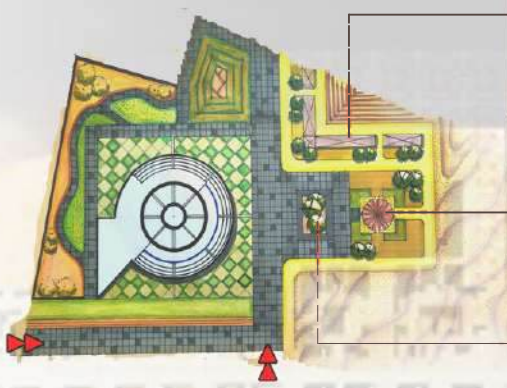
Hodka, Gujarat - Being one of the prime rural tourism spots in India, it directly needed this upliftment which would fill the gap in its educational prospect in turn enhancing its future for the better.

CONCEPT DEVELOPMENT

RE - CALLING ROOTS

At the fast moving pace of this world, one thing that remains constant about rural tourism is its culture. The roots of Hodka, Gujarat lies in it's craft; it's architecture; it's tradition.

Site Plan



ARCHITECTURAL PERSPECTIVE

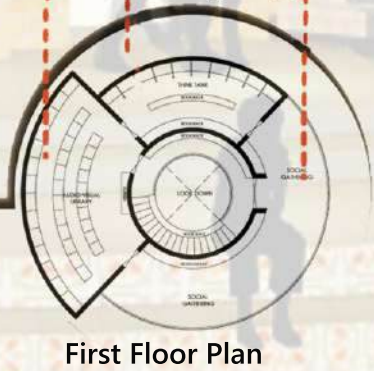
DESERT ARCHITECTURE- Bhunga style houses; circular mud structures with thatch roofs appropriate for harsh conditions.

Elements of design - Wind catcher, building around courtyards, solar energy and use of local materials.

Materials - Mud plaster, perdi Stone, Cow dung plaster.

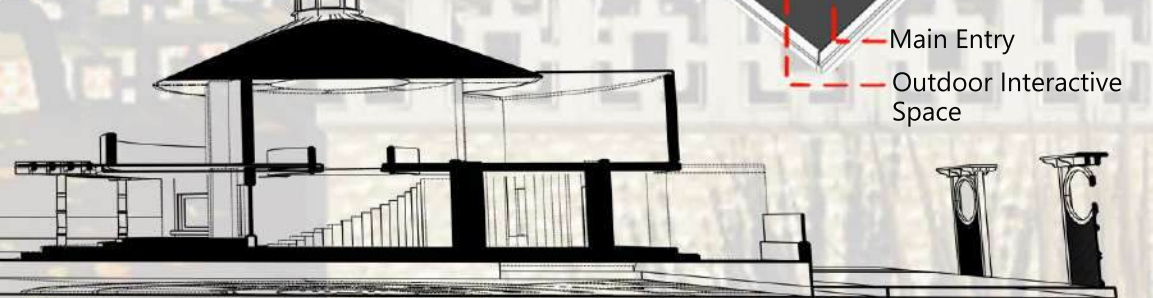
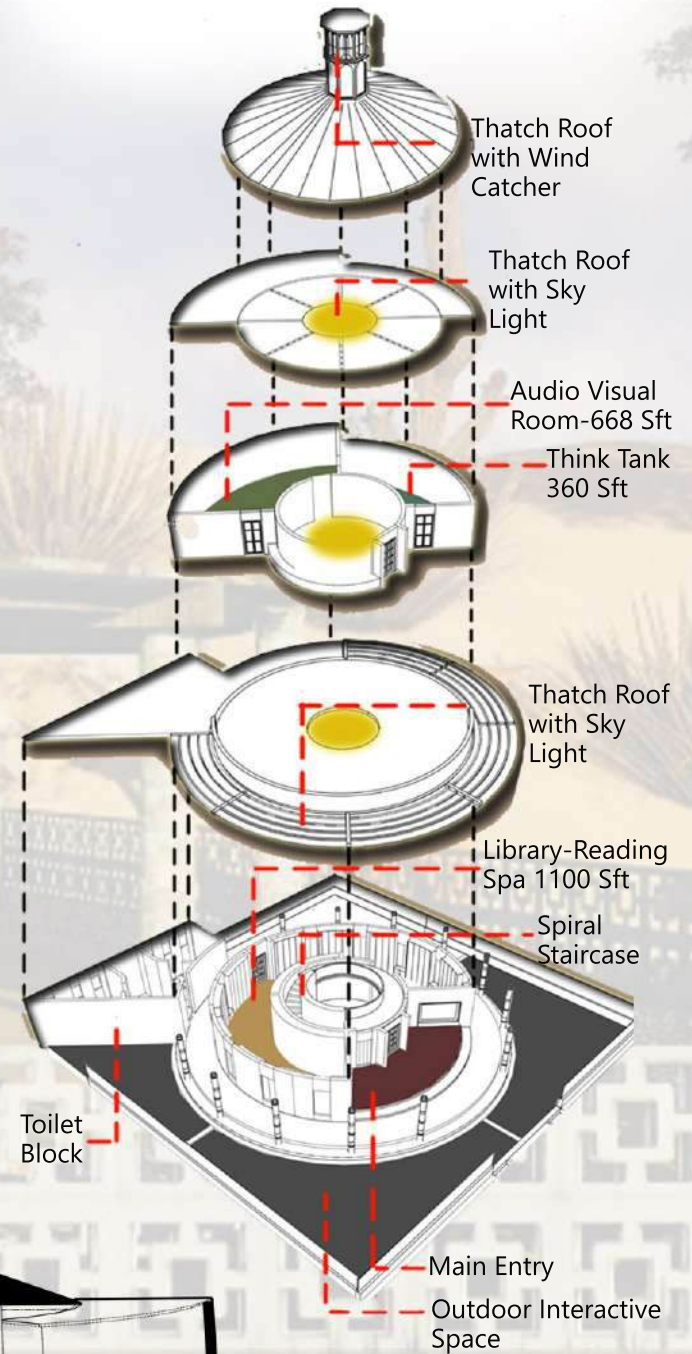
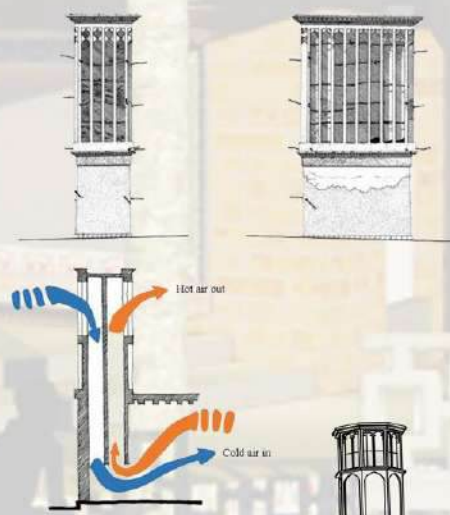
Architectural detail - Motifs similar to that of the craft of Hodka are also painted on the walls of the houses to provide a traditional touch to their architecture.

Ground Floor Plan

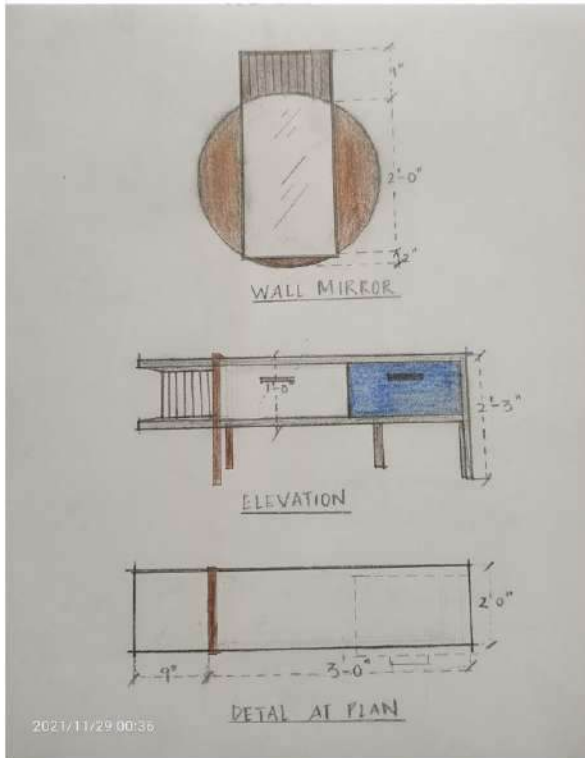


First Floor Plan

SUSTAINABLE COOLING

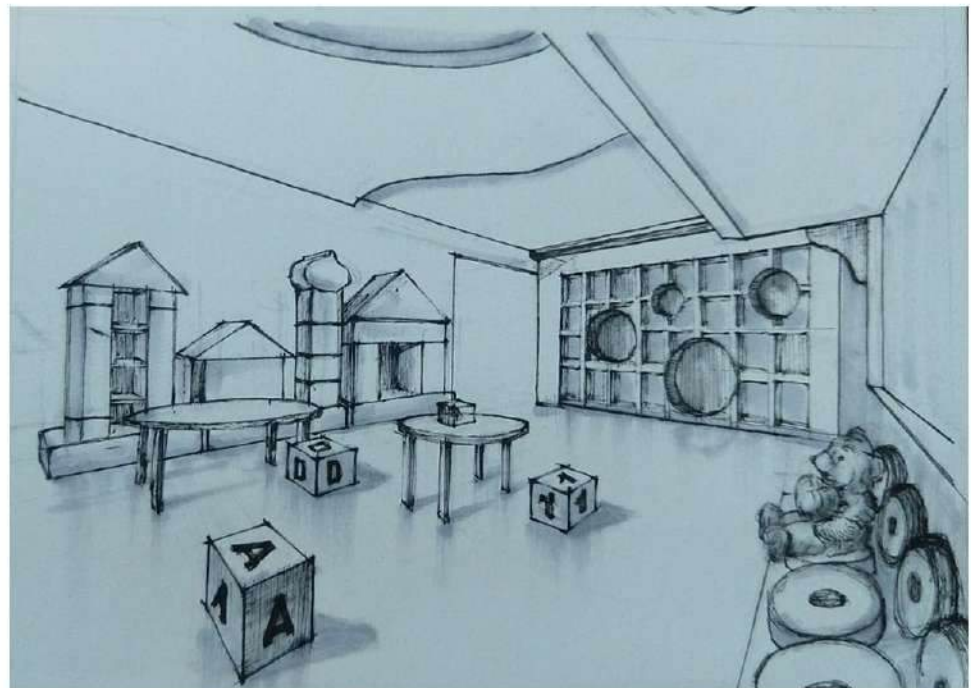
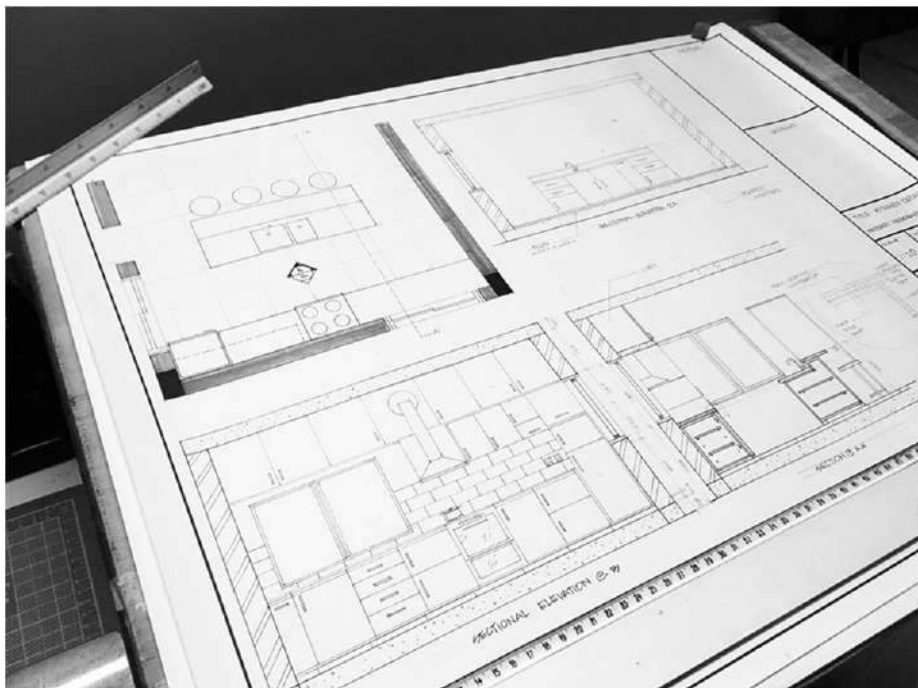


FURNITURE DESIGN



MISCELLANEOUS

SKETCHES AND MANUAL WORK



PHOTOGRAPHY

